

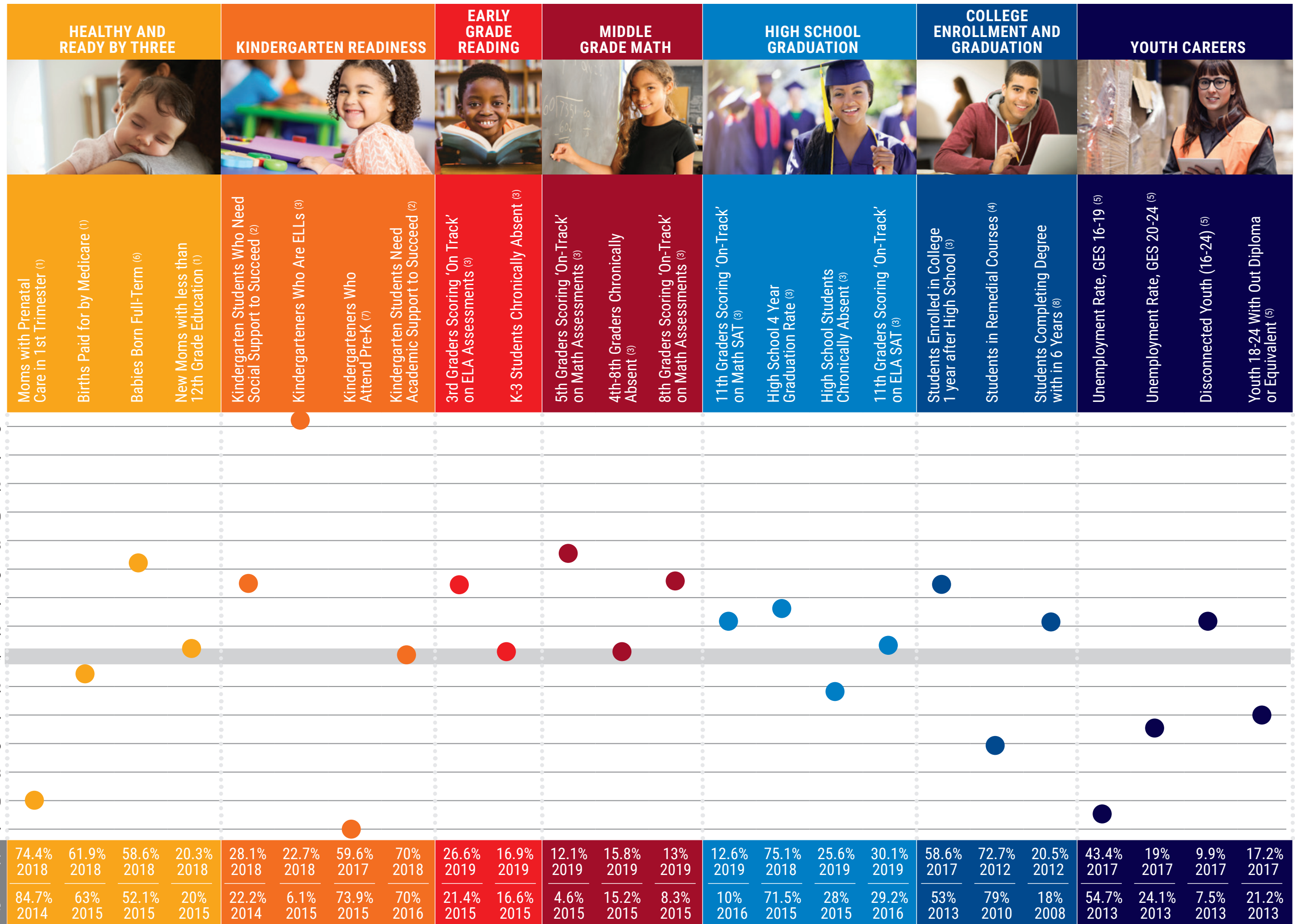
Improving Outcomes for Children, Cradle to Career



GOALS AND INITIATIVES		HEALTHY AND READY BY THREE	KINDERGARTEN READINESS	EARLY GRADE READING	MIDDLE GRADE MATH	HIGH SCHOOL GRADUATION	COLLEGE ENROLLMENT AND GRADUATION	YOUTH CAREERS	
		SAFE FROM VIOLENCE							
BABY BUNDLE ECOSYSTEM	Increase Universal Screenings and Early Intervention	■ ■ ■	■ ■ ■						
	Increase Maternal Wellness Supports	■ ■ ■							
	Pilot Universal Home Visiting	■ ■ ■	■ ■ ■						
	Increase Parental Supports	■ ■ ■	■ ■ ■						
	<i>Bridgeport Basics</i>	■ ■ ■							
	<i>Kick Off to Kindergarten</i>		■ ■ ■						
	Increase Literacy Programs	■ ■ ■	■ ■ ■	■ ■ ■	■ ■ ■				
	<i>Reach Out & Read / Read to Grow</i>	■ ■ ■	■ ■ ■	■ ■ ■	■ ■ ■				
	<i>Lexia Tutoring</i>				■ ■ ■				
	Increase Infant/Toddler Care	■ ■ ■	■ ■ ■						
STEM ECOSYSTEM	Track PK Enrollment		■ ■ ■						
	Pilot Cross-Sector Data Exchange	■ ■ ■	■ ■ ■	■ ■ ■	■ ■ ■				
	Pilot Medicaid Redesign	■ ■ ■							
	Align In-School and Out-of-School STEM Programs				■ ■ ■	■ ■ ■			
STEM ECOSYSTEM	Increase STEM Provider Professional Development				■ ■ ■	■ ■ ■			
	Increase Family Engagement in STEM				■ ■ ■	■ ■ ■			
	Pilot Tallo				■ ■ ■	■ ■ ■	■ ■ ■	■ ■ ■	
STEM ECOSYSTEM	Increase Industry and Education Links						■ ■ ■	■ ■ ■	
		COMMUNITY RESILIENCE INITIATIVE							
		Increase Awareness, Screenings, Trauma-informed Care and Community Resilience							

Bridgeport Community Indicator Data

Indicator data measure our progress toward Outcome Goals. We use this data to inform decisions on resources, investments, and course direction.



1) Source: Connecticut Department of Public Health, HSS Section, Oct 2019. Data for 2016, 2017, and 2018 births.

2) Source: Connecticut State Department of Education via EdSight. Kindergarten Entrance Inventory Results, 2017-2018 (for Bridgeport School District).

3) Source: Bridgeport Public Schools via EdSight. Data provided for 2017-2018, 2018-2019 school years.

4) Source: Connecticut Department of Education via Edsight Trends in Enrollment, Credit Attainment & Remediation Report (P20Win) 2015, 2016, 2017.

5) Source: American Community Survey, 2013-2017 Five Year Estimates.

6) Source: Bridgeport Hospital and St. Vincent's Medical Center. Data for July 1 to June 30, 2015-16, 2016-2017, 2017-2018.

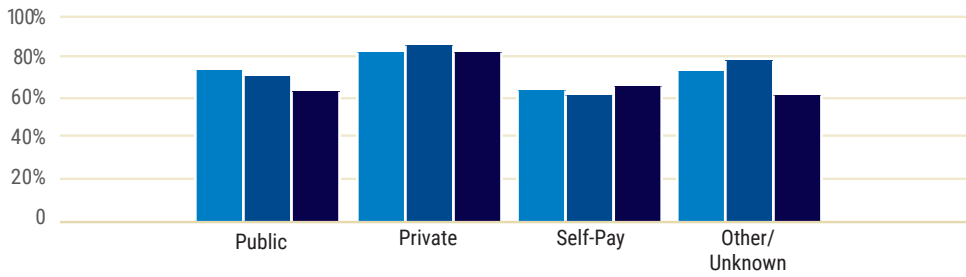
7) Source: Bridgeport Public Schools. Data provided for 2018-2019 school years.

8) Source: National Student Clearinghouse. 2010-2012 cohorts. Report published on 4/11/2019.

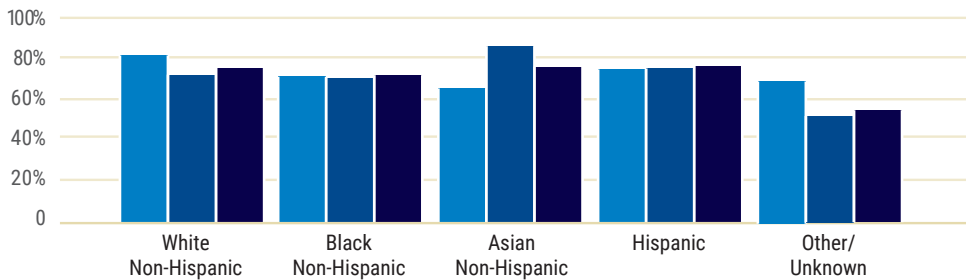
* Baseline year differs by indicator due to the nature of the data. The year represented is indicated under each 'current' and 'baseline' percentage.

Bridgeport Disaggregated Data

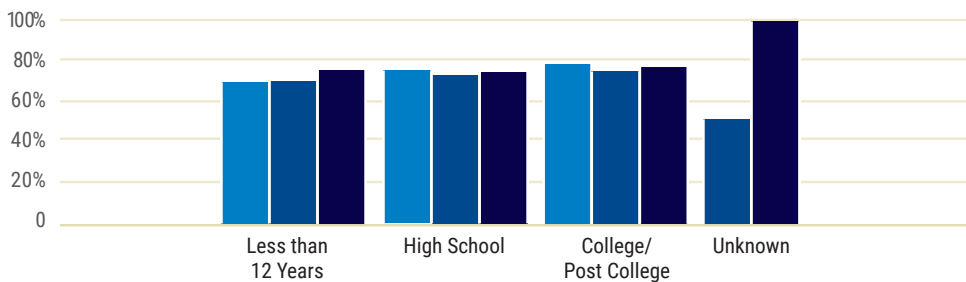
Mothers Beginning Pre-Natal Care in First Trimester by Payer of Delivery ⁽¹⁾



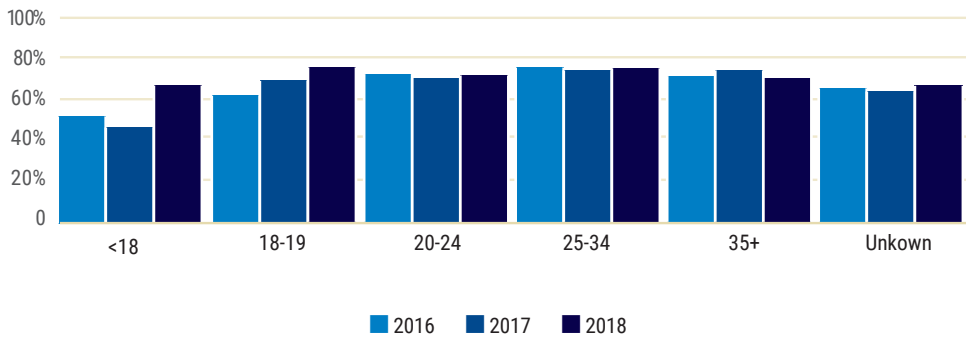
Mothers Beginning Pre-Natal Care in First Trimester by Race ⁽¹⁾



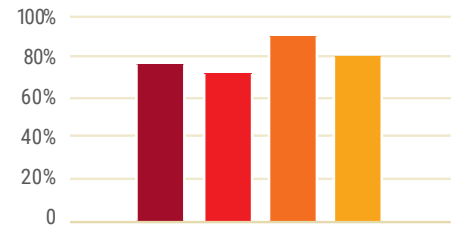
Mothers Beginning Pre-Natal Care in First Trimester by Level of Education ⁽¹⁾



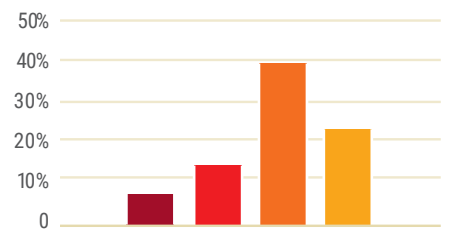
Mothers Beginning Pre-Natal Care in First Trimester by Age ⁽¹⁾



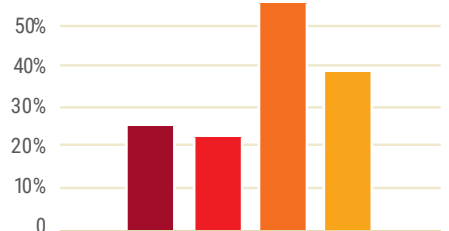
High School Graduation Rates by Race (2018-2019) ⁽³⁾



Fifth Graders Scoring at Level 3 or Level 4 on SBAC Math by Race (2018-2019) ⁽³⁾



Third Graders Scoring at Level 3 or Level 4 on SBAC English Language Arts by Race (2018-2019) ⁽³⁾



■ Black ■ Hispanic ■ Asian ■ White

1) Source: Connecticut Department of Public Health, HSS Section, Oct 2019. Data for 2016, 2017, 2018 births.

3) Source: Bridgeport Public Schools via EdSight. Data provided for 2018-2019 school years.